

LT905 nRF5X LoRa GPS BLE Module

Product Specification

Version	Issue date	Changes	Remark
1.0	2024/11/11	Initial Version	

IMPORTANT

This document contains important information and
Should not be disclosed to third parties without prior written consent of Amazipoint technology Ltd.

Address : 2F,No. 113, Zhongyang Rd., Xindian Dist., New Taipei City, Taiwan (R.O.C)
www.amazipoint.com

Signature:

Author:	Reviewed by:	Approved by:	Remarks:
Seger Tsai			

LT905 nRF5X LoRa GPS BLE Module

1 Introduction

LT905 is a real-time GPS tracker that works without cell service. By built-in GPS and long-range radio technology, it allows you to stay in touch with people even if your phone fails. It's an all-around tracking solution for all kinds of outdoor activities.

LT905 working frequency is between 850 to 930MHz with 30dBm maximum power capability.

2 Features

- Real-time GPS
- nRF52840 main processor.
- OTA support.
- Bluetooth connect phone without cell service need.
- fuel gauge LED indicator.
- Receiver sensitivity: -148dBm
- Communication distance: 8000 meters typ.
- Maximum output power: 30dBm
- Frequency band: 850~930MHz

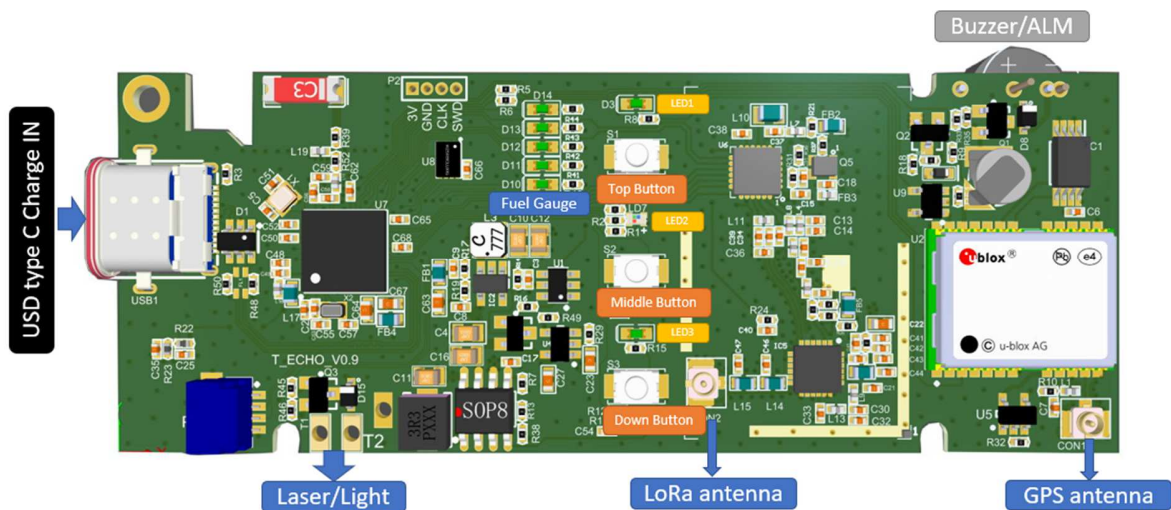


Figure 1 Product Top view

3 Specification

3.1 Electric specification

Processor	
MCU	nRF52840 32-bit
SRAM	256 KB SRAM
Flash	1MB
Wireless protocol	Bluetooth 5.3
CPU Working frequency	64 MHz

LoRa	
chip	SX1262
Band	868/915/923MHz
Crystal frequency	32MHz TCXO
Power	30dBm Max.
Receiver sensitivity	-148dBm
Communication distance	8000 meters typ.

GPS	
Module	NEO-M8N (L76K Option)
Support System	GPS, BeiDou
LED indicator	UTC time pulse 1 sec LED indicator

Power	
Charger	Type C connector @ 2.5A Max. charge current.
Battery	1 cell Li-On Battery.
TX current	700 mA Max. instantaneous.
RX current	-
Sleep current	-

Button	
Button1/ Top button	Power Button, short depress for power on, long depress for power off.
Button2/ Middle button	Reserve.
Button3/ Down button	Wake up / Multi function Button

LED indicator & Others.	
Fuel gauge LED indicator	5 LEDS battery power indicator
LED1/ Top LED	GPS time pulse LED
LED2/ Middle LED	Live LED
LED3/ Down LED	Battery charge status LED
Laser/Light	Laser or Light auxiliary parts
Buzzer	Buzzer for urgent alarm

Table 2 Configuration Parameters

3.2 Mechanical dimension

